

Abbott Mfg. Co.

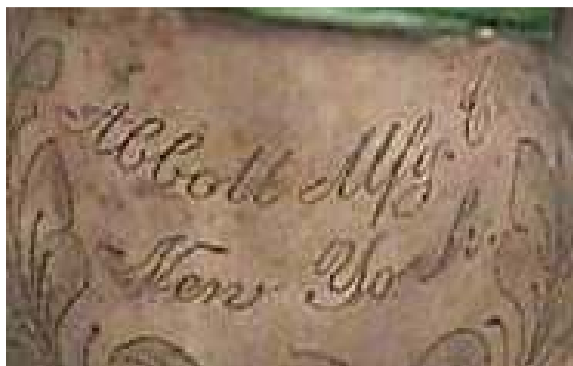
Manhattan, NY

- 1909 Abbott Mfg Co, #2314 Broadway, NYC (*Trow's Directory*)
- 1915 Abbott Mfg Co, soaps, #56 8th Ave, NYC (*Polk's Directory*)
- 1917 no listing in Manhattan telephone book
- 1920 same as 1917
- 1924 Abbott Mfg Co, specialty sales, #1400 Broadway, NYC (*Buffalo Courier*)
- 1940 no listing in Manhattan telephone book
- 1960 Abbott Mfg & Metal Co wins bid in Manhattan for roof repair (*Long Island Star*)

It is uncertain if any of the above companies is the same one importing these brass instruments from Europe. They are usually marked "Bohemia" and have an anchor logo on the center valve indicating manufacture by Bohland & Fuchs of Graslitz.

One mouthpiece that came with a trumpet marked "Globe" and made in Bohemia is marked "Abbott Professional B&J NY" indicating a relationship with music retailer Buegeleisen & Jacobson.

B&F was located in Graslitz (Kraslice) at the edge of Bohemia. This became Czechoslovakia after WWI so many of these instruments date to before that time.



Photos from Horn-u-copia.net & auction sales