

Fillmore Brothers Co. & Fillmore Music House

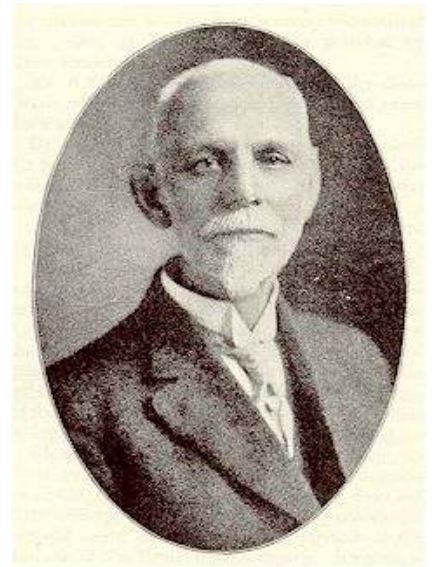
Cincinnati

- 1874 Frank G. Fillmore (1853-c.1890) is a printer in Cin.
- 1875 brother Charles Millard Fillmore (1860-1952) and cousin Lavius Challen Fillmore (1856-1945) join Frank as printers
- 1876 first listing for Fillmore Brothers, 8 East 4th St., music book publishers (directory)
- 1878 brother James Henry Fillmore, Sr. (1849-1936) joins them (top photo)
- 1881 Fillmore Brothers moves to 12 Glenn Building, 185 Race St
- 1890 brother Fred A. Fillmore (1856-1925), music teacher & composer, is listed with them (dir)
- 1891 Fillmore Brothers moves to 141 West 6th St. and also starts Armstrong & Fillmore, printers & binders (dir)
- 1900 Fillmore Bros. now at #119 West 6th St. (dir)
- 1902 now Fillmore Brothers Co., #421 Elm St., James Sr. pres, W.W. Warwick vp, Lavius sec-tres, Charles director
- 1905 now at #528 Elm St. (dir)
- 1912 name changes to Fillmore Music House, #538 Elm St.
- 1916 Fillmore introduces the Contesting model cornet and advertises heavily in *Music Trade Review*

The "Contesting Model"



- 1920 James Henry Fillmore, Jr. (1881-1956) is the manager; he is a publisher, composer, & trombone player (bottom photo) (census)
- 1925 now at #524-528 Elm St. (dir)
- 1930 now at #522-528 Elm St. (dir)



1941 still at #522-528 Elm St., James H. Jr. is pres, Challen is sec-tres; claim established in 1874

1952 Fillmore Music House is absorbed by Carl Fischer music

1956 Henry (JHF, Jr.) dies in Miami, Florida where he is head of the University of Miami music department (obit)

Instruments marked "Fillmore Bros" date to 1876-1901.

Instruments marked "Fillmore Bros. Co." date to 1902-1911.

Instruments marked "Fillmore Music House" date to 1912-1952.

Most brass made in Austria; model names "National", "Elite", "Imperial", "Marvel" & "Avalon" (Horn-u-copia.net & auction photos)

Photo 3 is American model and possibly a York stencil

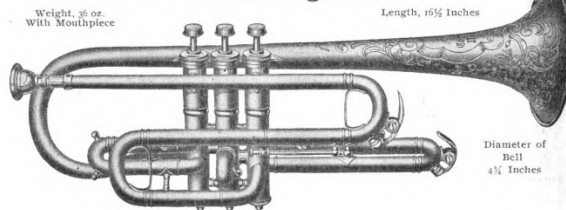
1916 ad below



If You Could See—

the quality of material, the exacting care and the interest taken in the manufacture of—

The "Contesting Model"



You would accept it as your musical partner for life.

Were you to see the super-quality of cornet brass (regardless of the present high cost of this material), the grade of valve metal from which the valves are made, see the care taken by each workman as the instrument passes through his hands toward its completion, then see the pride with which the finished cornet is tested and shipped, you would be as enthusiastic as we are about this cornet.

As it is quite impossible for all the readers of *The Musical Messenger* to see the procedure through which the "Contesting Model" Cornet passes, we can only give you our word that such are the conditions, and an inspection of the finished cornet will prove it.

When you try the "Contesting Model" Cornet take special notice of the new *non-tipping* valve, the only cornet made with this special device. The *non-tipping* valve will *never* turn in the casing while playing.

FILLMORE MUSIC HOUSE
A Music House Since Eighteen-Seventy-Four
MORE FRATERNITY