

# G. Leblanc Corp.

## Kenosha, Wisconsin

- 1904 Georges Leblanc (1872-1959) (photo 1) establishes his woodwind factory by purchasing Noblet at La Couture, France (photo 2 from 1922) (*New Langwill Index*)
- c1940 Vito Pascucci learns instrument repair as a summer apprentice at Holton then does repairs at his brother's music store
- WWII Vito Pascucci (1922-2003)(photo 3) is working as a repairman for Glenn Miller during the war (photo 4) where he meets son Leon Leblanc (1900-2000)(photo 1, page 2) while sourcing instruments (Conn)
- 1946 Vito opens the G. Leblanc Corp. in Kenosha, Wisconsin with two workers to import their woodwind instruments and soon after brass made by Courtois (*NLI*)
- 1959 Leon Leblanc becomes the head of Leblanc in France
- 1960 The Vito brand of less expensive student instruments is started (Conn) [*NLI* says 1951 with clarinets made in Kenosha and brass made by Holton]
- 1964 Leblanc purchases the Holton Co. (*NLI*)
- 1966 Leblanc purchases the Bublitz Case Co. (*NLI*)
- 1971 Leblanc purchases the Martin Band Instrument Co from Wurlitzer and moves production to Kenosha (*NLI*); son Leon Pascucci (below) joins the company



- 1972 Leblanc introduces the "Direct Air" design for trumpet and flugel horn made by Courtois (advertisement)
- 1989 the American Leblanc acquires 65% majority interest in the parent French company; taking over management
- 1991 Leon Pascucci becomes president of Leblanc in US



- 1993 Vito purchases the remaining 35% of Leblanc (*NLI*)
- 2001 Leon Pascucci now CEO
- 2003 Leon is board chairman following his father's death; the French factory at La Couture burns down; they have 37 workers at the time
- 2004 the Pascucci family sells Leblanc to Steinway for \$36M; the Kenosha plant at #9009 Sheridan Rd is closed and the Martin trumpets made there will now be done at other locations or outsourcing; the Elkhorn factory is still making Holton brass
- 2007 the clarinet factory at #7001 Leblanc Blvd in Kenosha closes and production moved to Elkhart; the Vito line of brass ends
- 2008 Conn-Selmer closes the Elkhorn plant and moves all production to Eastlake, Ohio; the former King plant

**Leblanc Trumpets:**

Early trumpets were made by Courtois in Paris with the first ones having no model number.

#6614 c.1955



#70xx c.1955 – they now add the medallion



## Symphonie model:

Examples found have serial numbers in the 7000 range so date to the 1955 to 1957 period. These have a 0.453" medium bore.

#7253 c.1956



## Symphonie II model:

Examples found have serial numbers in the 8000 to 21000 range so date to the 1957 to 1969 period. These have a 0.453" medium bore and a forward slanting slide brace.

#9531 c.1958



#9533 c.1958



#9637 c.1958



#10237 2<sup>nd</sup> on right c.1959



### **Dynamique model:**

Examples found are in the 8000 range so may have been a short-lived model around 1957. They are said to have a 0.460" ML bore.

#8410 c.1957



### **700 Special model:**

I have not found examples of this to verify dates but it is said to have a 0.460" bore.

### **707 Sonic model:**

This is one of the most often found models so must have been very popular. Serial numbers are in the 10000 to 20000 range so date to the 1959 to early 1970s period. They are included in a 1972 catalog. Most have a 0.453" medium bore but the 1972 catalog says they are available in ML and L bores also.

#11014 below & top right c.1960



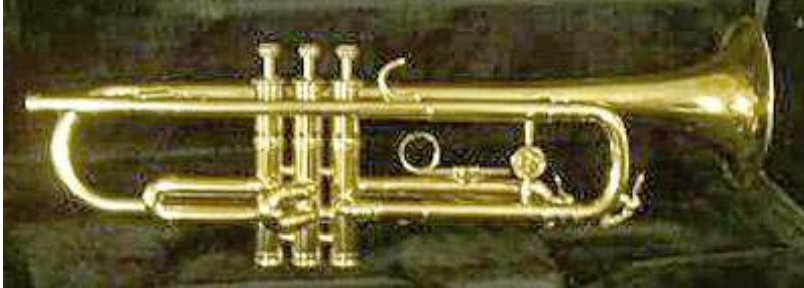
#11272 below and 2<sup>nd</sup> on right c.1960



#15471 c.1964



#15750 c.1964



#20033 c.1968



**X707 model:**

No photos found for this model but it's supposed to have a 0.468" bore. One example has #10982 so c.1960.

**707 Al Hirt model:**

This model is named after popular trumpet player Alois Maxwell (Al) Hirt (1922-1999) (photo 2). Examples have serial numbers in the 15000 to 26000 range so date to the 1964 to 1973 period. They all have the 0.468" bore.

#15195 c.1964



#16537 c.1965



#17072 c.1966



#26765 c.1973



**707 Herriot model:**

This model is named after jazz trumpeter Bobby Herriot (photo 4) and has an up-turned bell. These have a large 0.468" bore and examples have serial numbers in the 15000 to 17000 range dating them to the 1965 to 1966 period.

#16124 c.1965 / #17542 bottom right c.1966



## 770 Gozzo model:

These are named after trumpeter Conrad Gozzo (1922-1964) (photo 1) and have a 0.460" bore. Examples have serial numbers in the 14000 to 20000 range dating them to the 1963 to 1968 period.

#14502 c.1963



#15877 c.1965



#17240 Gozzo Special c.1966



#20120 c.1968



## 708 Sonic model:

Examples found are in the 19000 to 25000 range so date to the 1967 to 1972 period. They are not listed in the 1972 catalog. These have a 0.460" bore and sometimes have the main brace on the tuning slide. The 1<sup>st</sup> valve trigger is straight up rather than curved as on the earlier horns.

#19402 c.1967



Compare this to a Courtois from the same period and you can see who actually made these.



## 880 models:

The 1972 catalog says these are in either C or D.

#19696 c.1968



#23642 c.1971





### **Noblet models:**

These were a less expensive model for more of an intermediate player. From 1955 of the serial numbers are the same.

#6785



#6925



Photos from auction sales or Horn-u-copia.net unless noted.

# Trumpet Dating Chart from known examples:

G. Leblanc Trumpets Dating Chart

