

Pan American Band Instrument & Case Co.

Elkhart, Indiana

- 1917 Conn starts the Pan American Band Instrument & Case Co. to make student grade horns and cases (Reed, 1953)
- 1919 Pan American was incorporated in November as the student grade line; early serial numbers start with "P" (Horn-u-copia.net); production is moved to the former Angledile Scale Co. one block from Conn (1917 map below)

For Bigger Profits
Sell PAN-AMERICANS

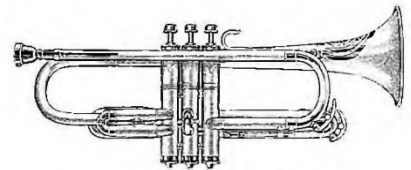
Complete Line
Superior Quality
Moderate Price
Factory Guarantee

PAN-AMERICAN dealers at over a thousand locations are supported by a complete service and maintenance plan that helps them to increase their band instrument profits.

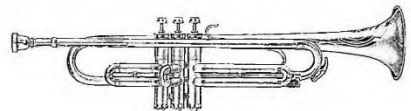
All instrument orders, in order for instrument to be PAN-AMERICAN complete, to be of quality, moderate priced, factory guaranteed, are sent direct to the dealer - he is assured his profit on every PAN-AMERICAN sale is his money. And PAN-AMERICANS guarantee - you will.

Write today for complete dealer proposition.

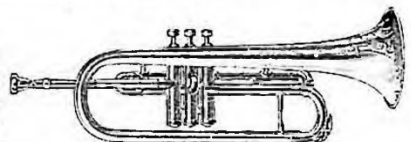
The Pan-American Band Instrument & Case Co.



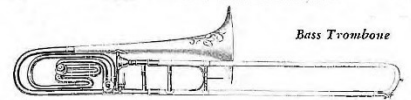
Pan-American Bb-A Cornet—No. 50-A



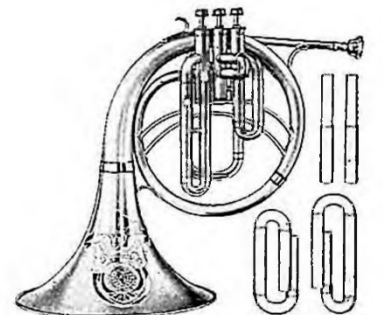
Pan-American Bb-A Trumpet—No. 64-B



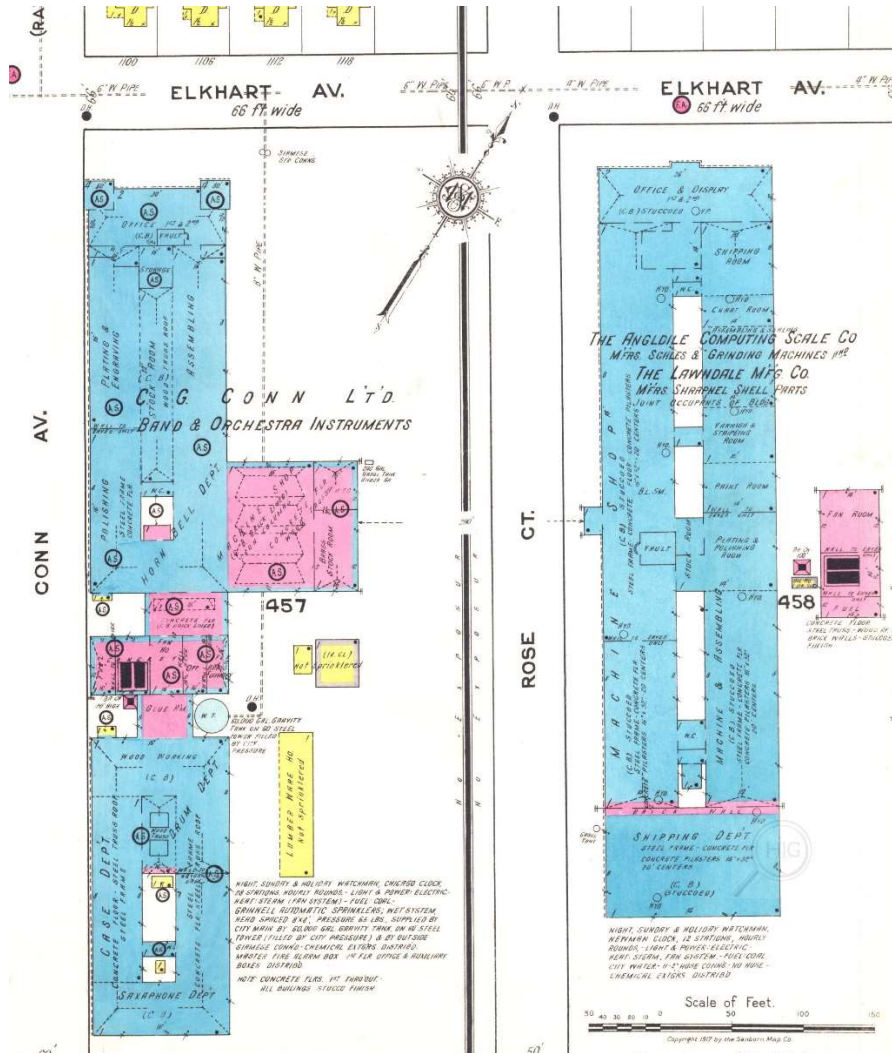
Pan-American Bb Slide Trombone—No. 64-H



Bass Trombone



Pan-American
Mellophone in F, Eb, D, C.
No. 62-E



- 1931 Pan American starts the Cavalier line of low-cost band instruments; there were seven models offered initially with more in development; all have a satin silver finish with gold bell (*Presto*, *March*); serial numbers start with the letter "O"
- 1949 Conn merges all subsidiaries, including Pan American, into one company, C.G. Conn Ltd (Reed)

1955 Pan American and Conn blend serial numbers at around 500000 (Horn-u-copia.net)

1958 all Pan American models end

Trombone #10690 c.1919



Cornet #79889 c.1929



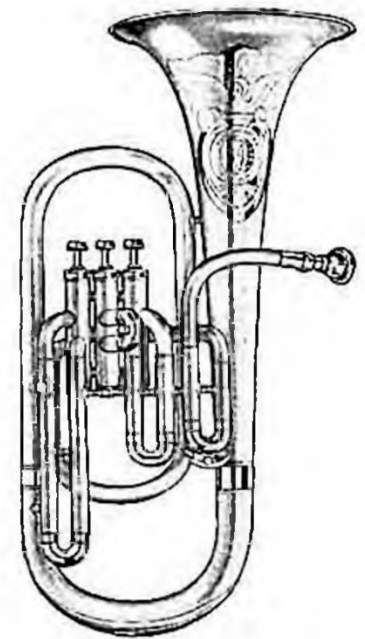
Trumpet #83332 model 66B c.1932



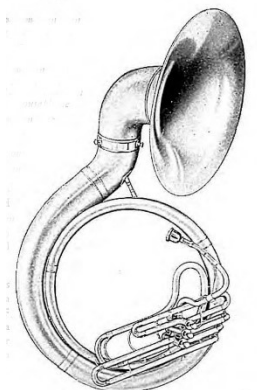
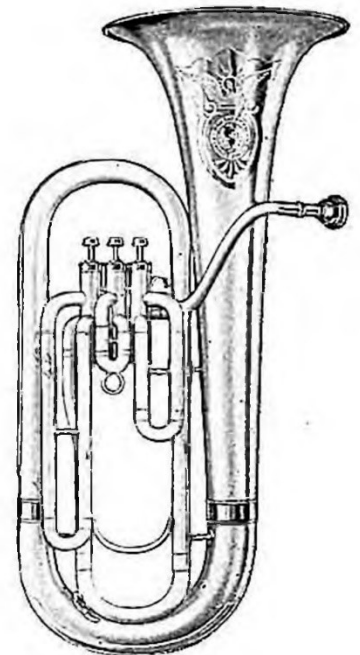
Cornet #145735 model 56A c.1941



Illustrations at right from 1935 Pan American band guide



*Pan-American E_b
Upright Alto—No. 56-C*



Cavalier Instruments

Cornet #1447 model 90A c.1931



Trumpet #2656 model 92B



Trumpet #34000



Cornet #54448 below & top right



Instrument photos from Horn-u-copia.net & auction sales