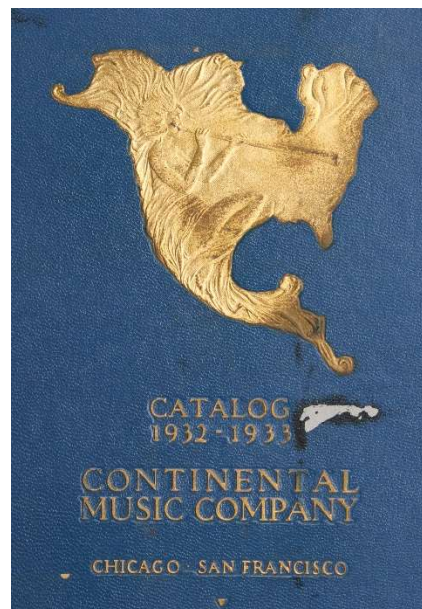
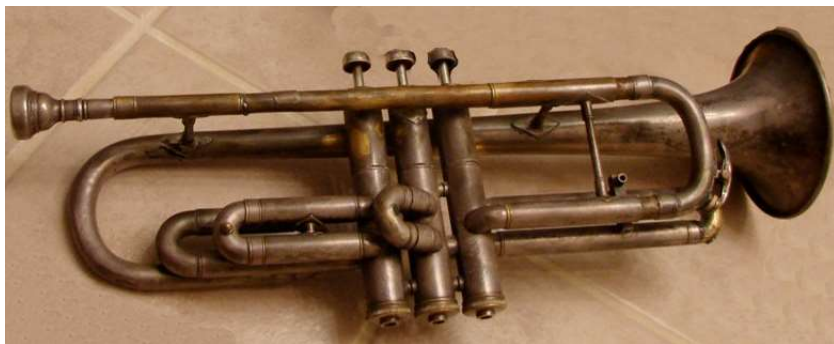


Continental Music Company

Chicago – San Francisco

- 1925 Conn establishes the Continental Music Co in Chicago as a wholesale outlet for band instruments (no reference).
- 1928 The Pacific Coast branch of Continental Music starts. Located at 140 2nd Street – 5th floor, San Francisco; Paul M. Gazlay manager (Polk's directory).
- 1930 John L. Luellen (1898-1977), pres. of musical instrument store, Chicago (census).
- 1931 Continental Music Co, 630 South Wabash Ave, Chicago. John L. Luellen, pres; started with \$150,000 capital stock (*Certified List of Domestic Companies in Illinois, 1931*).
- 1932 The SF office is now at 536 Mission, 5th floor (Polk's directory). The Chicago store is at 630 South Wabash (letterhead).
- 1935 Continental Music Co, P.M. Gazlay is Pacific Coast manager. Wholesalers of band & orchestra instruments. #536 Mission, SF (Polk's).
- 1939 Pacific office now at 569 Mission; Ralph W. Lochow (1908-1971) manager (Polk's).
- 1945 Pacific office now managed by Howard Unger (Polk's).
- 1948 Continental Music Division of C. G. Conn Ltd, Lynn L. Sams (1896-1990, photo 2) manager. #560 Mission, 5th floor, San Francisco (Polk's).
- 1951 The San Francisco office has moved to 156 2nd St, 2nd floor (Polk's).
- 1956 This is the last year for the San Francisco office (Polk's).

Early brass instruments from the 1930s with the "Continental" name are stencils of Cavalier models by Pan American (below & photo 3 at right).





Post-WWII brass with the Continental Colonial name are Pan American stencils. These likely ended in 1955 with the closing of Pan American (below & photos 2& 3 at right).

Trumpet #278175 c.1954



Cornet #172490 c.1948

