

Frank Holton & Co. Trumpets Elkhorn, Wisconsin

1899 Holton produces his first trombone in Chicago

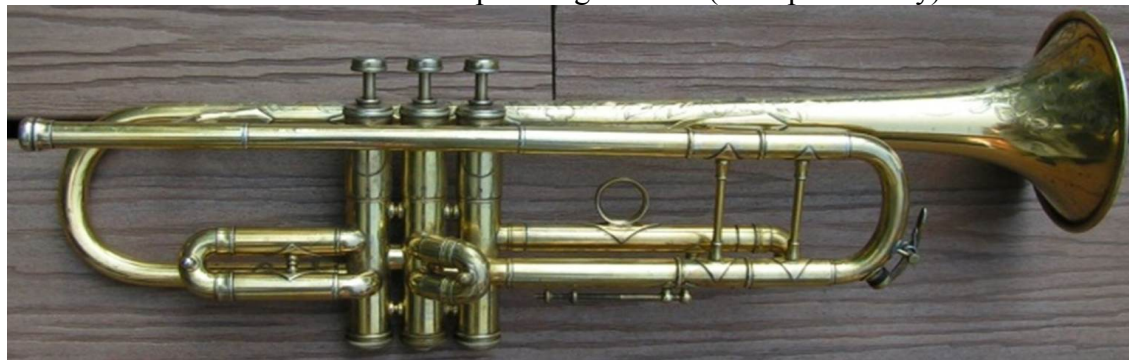
1902 now with 14 workers, #70 E. Madison, Chicago

1904 now Frank Holton & Company, moves to 107 E. Madison, Chicago

Early trumpet design c.1905 (Trumpet History)



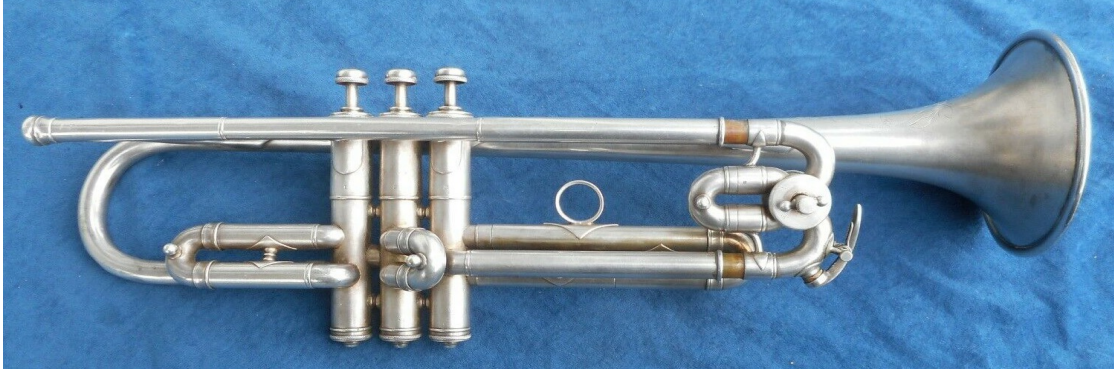
A more modern trumpet design c.1911 (Trumpet History)



#12036 c.1911 with unique curved slide brace to miss the valve change key (Horn-u-copia)



#18231 c.1912 with large 0.468" bore; the middle tuning slide piece is now gone (auction)



#23468 c.1914 with Bb/A valve moved out of the tuning slide; this probably helps with weight distribution but it's in the way for the left hand (auction photo)



#23970 c.1914 with a stop rod for the key change rather than the valve (Horn-u-copia)



#26593 c.1914 (author's photo)



#44819 c.1918 with early Elkhorn marking (Horn-u-copia)



1918 Holton moves to #320 N. Church St, Elkhorn, WI with 200 workers

#49920 c.1918 (auction)



1919 development of the Revelation trumpet

Early Revelation Prototype - December 1919 (Trumpet History)



Announcing
**The
 Holton Revelation Trumpet**

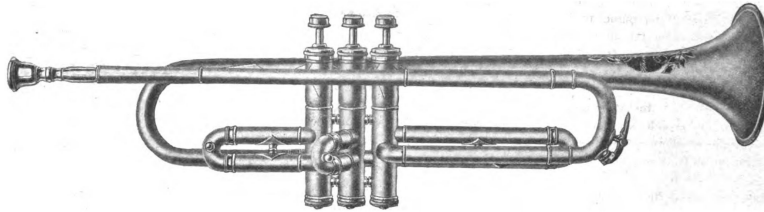


Illustration Shows Trumpet Built in Low Pitch Only

A Wonderful Advance
A Realization of the Possibilities of the Trumpet

*Concealed
 Quick-change
 to A*

*Phosphor
 Bronze
 Valves*

*The beautiful Lines
 of this Trumpet com-
 mand instant atten-
 tion. Note the
 elimination of
 unsightly braces.*

*In no instrument has
 the famous Holton
 workmanship shown
 to such marked
 advantage.*

The tone, scintillating in its brilliancy, pure, true and penetrating, captivating the player as well as those who hear it—a tone so rich, resonant and flexible that the possibilities of this instrument are absolutely marvelous, giving the player greater endurance, more power and an astonishing command of the instrument.

The tune is true to pitch in both B-flat and A, and the extreme ease of blowing appeals to all who have tried this trumpet.

Endorsed not only by a majority of our best trumpet players, but by the entire Trumpet Sections of many of our best Symphony Orchestras.

The Revelation Trumpet has been on the market for some months, but the demand has been so great that we did not dare announce it until our production of this instrument had increased to an extent that would enable us to take care of orders.

Use the Revelation for ten days in your actual work. It is then the realization of the possibilities of this instrument in the hands of even the ordinary player will convince you more tellingly than we can in print how necessary this trumpet is to the success of the trumpet player of today.

The new Holton Trumpet can be purchased for cash or on easy payments and your old instrument traded in as part payment. No obligations are incurred in sending for the Revelation on ten days' trial.

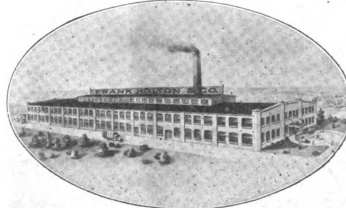
Try this Trumpet for Ten days.

*Since 1898 Holtons
 have been built
 under the personal
 supervision of
 Frank Holton, the
 Master Builder.*

*Built to the highest
 standard ever set
 in the band
 instrument industry,
 Holtons are the
 recognized quality.*

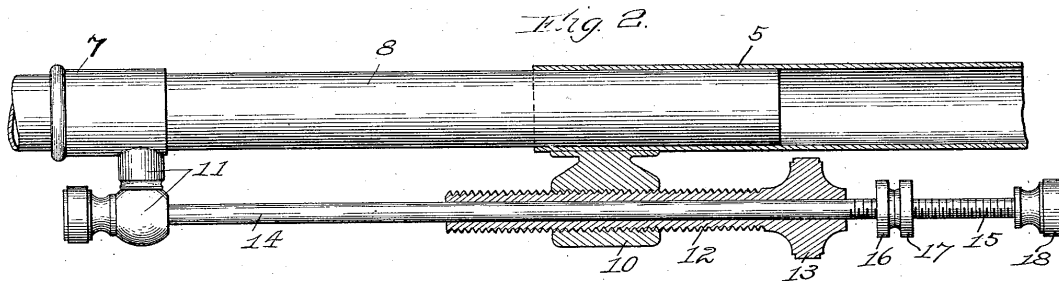
THE LARGEST EXCLUSIVE MAKERS OF STRICTLY HIGH-GRADE BAND INSTRUMENTS

**Frank Holton
 & Co.**

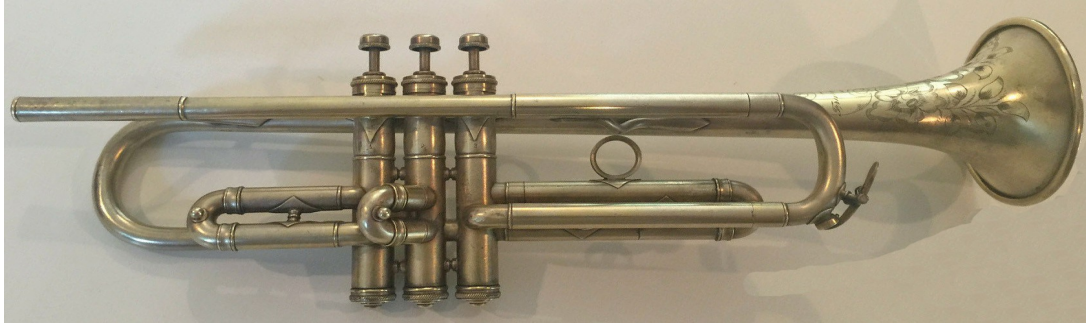


**Elkhorn
 Wis.**

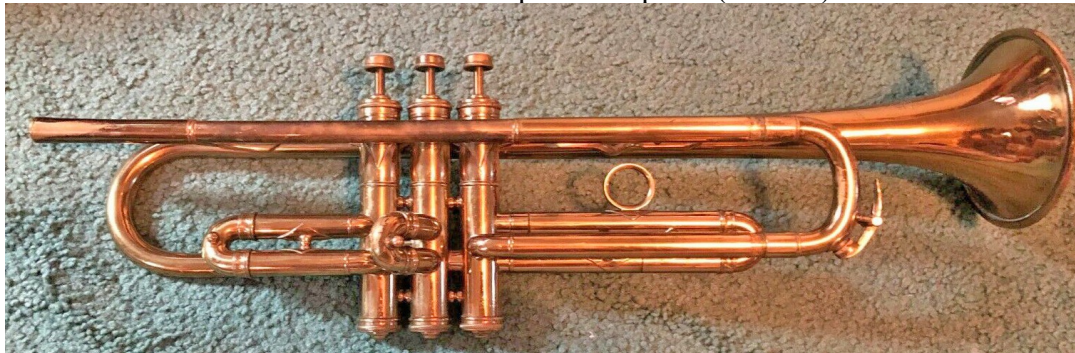
1920 Holton granted patent #1,330,806 for this tuning slide stop rod for trumpet



#70935 c.1921 Revelation (auction)



#71240 c.1921 with patent stop rod (auction)




Close up of stop rod [probably done this way to not be seen from the side]



#79920 c.1923, Revelation (auction)



Gustav Heim ad from 1923 showing his involvement with the Revelation design



THE embodiment of the true spirit of Symphony Trumpeting, Gustav Heim's artistry has evoked the admiration of practically every noted director who has visited America. For years he was a feature of the Boston Symphony Orchestra, and left that organization for the Detroit Symphony. He is at present solo trumpet of the New York Philharmonic Orchestra. Mr. Heim uses and assisted in perfecting the Holton Revelation Trumpet.

GUSTAV HEIM
Solo Trumpet
N. Y. Philharmonic
Orchestra

Here is a little about trumpeter Gustav Heim; one of many Holton endorsers.

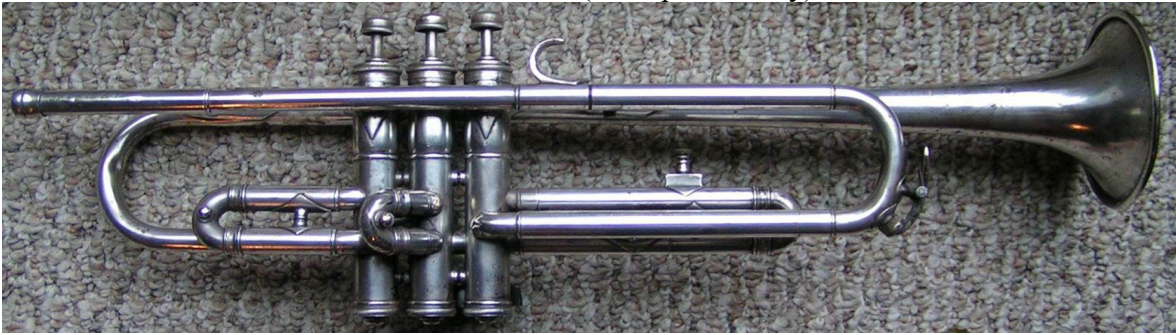
- 1879 born in Schleusingen, Germany
- 1903 emigrates to St Louis to join the St Louis Symphony Orchestra
- 1905 moves to the Philadelphia Orchestra, principal trumpet
- 1907 now third trumpet with the Boston Symphony
- 1914 becomes principal trumpet with BSO
- 1920 now principal with the Detroit Symphony Orchestra
- 1921 now with the New York Philharmonic
- 1923 now with the Cleveland Orchestra
- 1925 now with the New York Symphony
- 1929 with American Symphony Orchestra in NY and teaching
- 1932 ad for brass instruction, 92-28 Lamont Ave, Queens
- 1933 dies in Queens on October 30th from heart problems

Heim model 2 trumpet mouthpiece c.1927 (author's collection)



1925 Two new trumpet models have been released in the past few months. The Jazz Hound, a small bore (0.423") with a brilliant tone and the Cannon, a large bore model with more volume. (*Music Trade Review*, June)

The Jazz Hound (Trumpet History)



The Cannon c.1928 (Horn-u-copia)



Klatzkin model Revelation trumpet c.1926 (Trumpet History)



This model was named after Benjamin Klatzkin; a well known orchestra player of the time.



1884 Benjamin Leon Klatzkin born in Kovno, Russia
1913 emigrates to US and plays for the New York Philharmonic
1921 joins the Minnesota Symphony
1925 joins the LA Philharmonic
1931 joins the San Francisco Symphony
1945 back to LA Philharmonic
1965 dies in LA, April 13th

#94535 Revelation model c.1927 - built for a left handed player (auction)



#95323 Revelation c.1927 (auction) showing the new design with the first valve slide branches vertical rather than offset



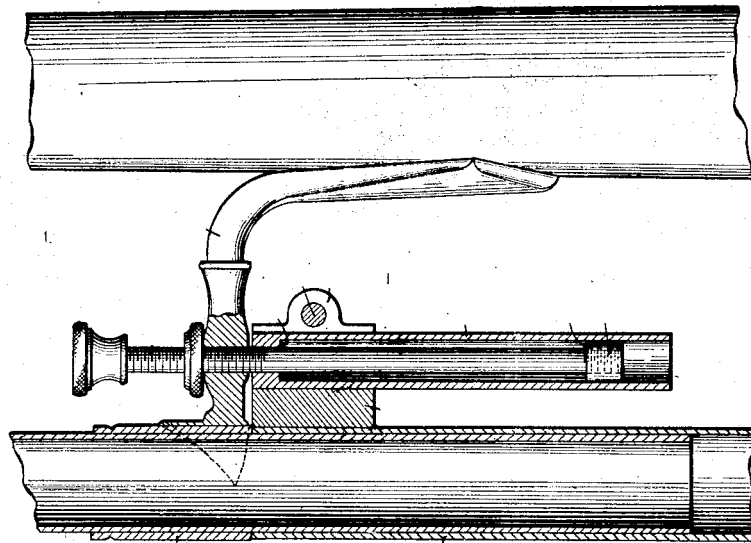
#95646 Revelation c.1927 (auction)



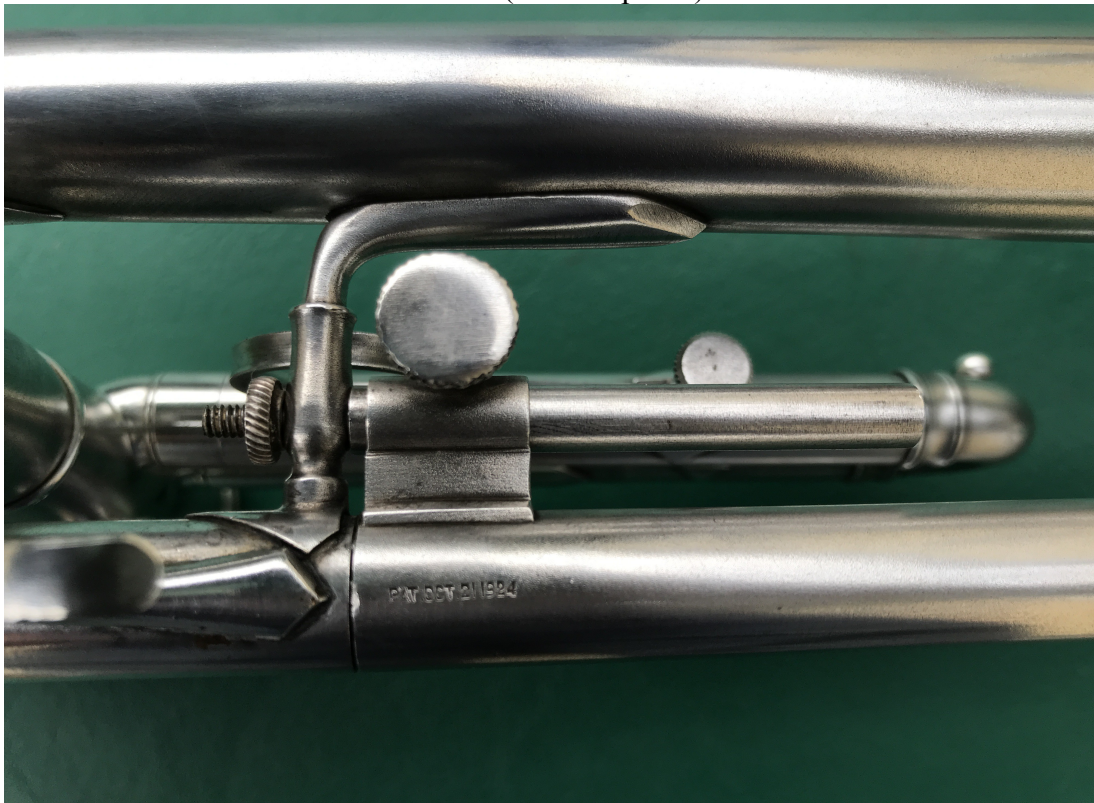
#96096 Revelation c.1927 (author's collection)



These trumpets feature the second design for a Bb/A stop rod which was designed by William Higgins for Holton and received patent #1,512,023 in 1924.



#96096 (author's photo)



#96561 A/Bb/C model c.1927 (auction)



1927 Holton has a new Revelation Llewellyn model trumpet and 30,000 booklets have been printed to send out to dealers. (*Music Trade Review*, November)

1928 ad

FOR STORES WITH REPUTATIONS



EDWARD LLEWELLYN
Solo Trumpet, Chicago
Symphony Orchestra
Uses a Holton
trumpet

THE piano dealer
who also sells
Holtons can point to
the artists who use
them with the same
pride as he speaks of
the great pianists and
the instruments they
use.

May we explain how
Holton quality can put
added prestige and profit
in your business?

FRANK HOLTON & Co.
364 Church Street
Elkhorn, Wis.

Holton
America's  Greatest
Band Instruments

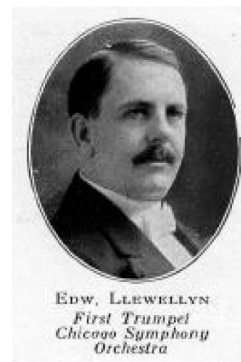
If the number of surviving examples is an indicator, the Llewellyn was the most popular artist model to have been made by Holton. These were produced from 1927 to 1931 and had a slight difference in the bell and lead pipe compared to the regular Revelation.

#97362 Llewellyn model Revelation c.1928 (auction)



A little history about Edward Llewellyn:

- 1880 Edward B. Llewellyn born in Missouri
- 1900 musician in Chicago
- 1902 musician in Windsor, Ontario
- 1905 musician 1st Class with DC Marine Corps
- 1912 joins the Chicago Symphony
- 1934 becomes the personnel manager for the CSO
- 1936 dies in a car accident in Wicket, Texas on September 25th



#104576 Revelation Don Berry model c.1929 (Trumpet History)



This is a very rare model with possibly only a few actually made. This has a large 0.485" bore and a light weight design. Holton only offered this for a few years. Berry was a student of Llewellyn so certainly got connected with Holton through him. Donald G. Berry (1894-1957) was a music teacher in Lincoln, Nebraska in the 1920s and 30s then owned the Berry & Grassmuck music store at #645 East Colorado St in Pasadena, CA in the 1940s and probably into the 1950s.

Llewellyn model c.1929



1929 The Collegiate student model trumpet is introduced; there is also supposed to be a Joseph Gustat (1888-1951) model trumpet made around this time; this was short-lived as he later switched to Conn.

#117783 Revelation c.1935



#119931 Reso-Tone c.1936 - a new model (Horn-u-copia)



#120820 Reso-Tone c.1937 (auction)



#127038 Collegiate c.1939 (auction)



#142872 Model 45 Revelation c.1941 (auction)



1941 Military model (auction)



#170178 Model 48 Revelation c.1947 (auction)



1948 Trumpet Models and Prices

Model 45 Revelation = \$132

Model 48 Revelation = \$132

Model 49 Stratodyne = \$200

Model 506 Collegiate = \$92

#205534 Collegiate c.1949 (auction)



#225684 Model 48 Revelation (auction)



#247831 Collegiate c.1953 (auction)



#274666 Stratodyne c.1955 (auction)



#290902 Super Collegiate with copper bell c.1956 (auction)



#321550 Collegiate c.1959 (auction)



#331855 Collegiate c.1960 (auction)



#251004 Collegiate c.1962 (auction)



1961 Ad for the new Galaxy models



Looking for truly thrilling performance — plus a dazzling new concept of instrument styling? Here it is — a brilliantly conceived trio of horns that projects you right into the exciting new world of tomorrow. In the new Holton "Galaxy" you enjoy a new warmth of sound, a comfortable new sense of "room" and an ability to project your tone with an exciting new feeling of power and command. Dynamic range and ease of blowing are nothing short of fantastic — piston and slide action literally give wings to your technique! And the biggest surprise? For all the flashing nickel finish and superb detailing, these new Galaxy instruments are priced within the means of even student budgets!

Galaxy

ELEGANCE . . . ECONOMY

1964 ad with Buck Clayton and his Model B-47 / 0.459" bore / one-piece bell / 1st slide trigger



AND HIS **HOLTON**

"The Swingin'est Horn I've Ever Played" — these are the words leading jazzman Buck Clayton uses to describe his Holton B-47. The critics, too, go overboard for his "beautiful, melodious phrases", the "warmth and sensitivity" of every note he blows and the "smooth and delicate" way his playing moves.

We can't guarantee the Holton B-47 will make a Buck Clayton out of everyone who plays it, but we can say there is no more beautifully built, more beautiful sounding or more beautifully in tune trumpet you could own. For over-all ease of response,

1964 ad with Bram Smith

BRAM SMITH

HERE IS A SUPERB ARTIST AND SINCERE TEACHER

who is very serious about his music



It is no accident that Bram Smith plays a Holton LS-51. He chose this instrument above all others for its live, vibrant tone quality, ready response and precise intonation.

Bram Smith was virtually "born to a horn." At the age of ten he entered the Royal Conservatory of Music, Toronto, Canada, where he followed a nine-year course of study in trumpet, piano, voice, theory, composition and conducting.

Winner at 15 of the Canadian National Competition for all brass instruments... featured concert tour artist with the U.S. Marine Band... extensive broadcasting, recording and producing activities... these are but a few of the many musical achievements of this outstanding artist.

Today Bram is one of the nation's most sought after clinicians and soloists. He is most highly respected for his keen friendships and his continuing interest in teaching young people. We shall be glad to provide you with further information on Mr. Smith's availability for clinic and concert purposes.



1964 Holton is sold to LeBlanc Company

#394182 Collegiate c.1965 (auction)



Who else?




Maynard's Horn is Maynard's Horn

It's Maynard Ferguson's new MF Horn by Holton. His horn. In every way. Because he provided all the specifications. The result is a trumpet as individual as the man who plays it. Did we say "play it!" Maynard does more than play the MF horn. He drives it. He flies it!

Nobody we know has ever asked more from an instrument. And no instrument has ever given more back. In range. In flexibility. In projection. In responsiveness. In brilliance and intonation.

Hear how well you really play.

Try out an MF Horn at your Holton dealer now.

HOLTON 

#871631 ST302 Maynard Ferguson model

