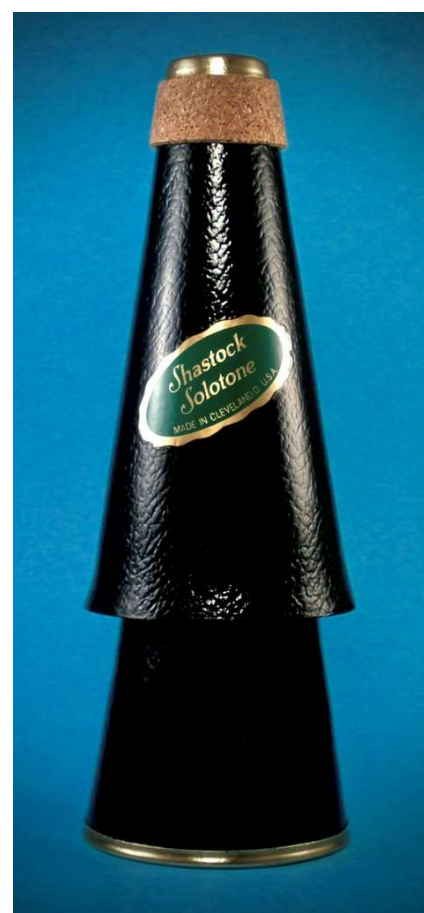


L. W. Shastock Co.

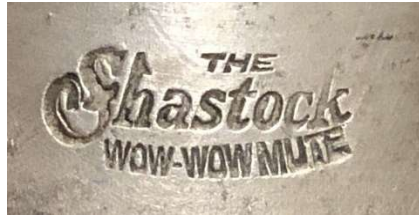
Cleveland, Ohio

- 1895 Aurel Shastock emigrates from Hungary to Cleveland.
- 1899 Son Louis William Shastock is born in Cleveland (census).
- 1918 Louis, musician for the Hodge Minstrels, #145 W. 45th St., NYC. He is living in Cleveland (WWI draft).
- 1920 Louis is listed as a tool shop inspector (census).
- 1921 Louis is listed as a musician (Cleveland Directory).
- 1922 June article in *Music Trade Review* reports good sales of trombone mutes made of a special process black fiber. Their office is at #218 Erie Building, Cleveland.
- 1927 L.W. Shastock Co., #2570 Superior Ave., 2nd floor (dir). An article in *Music Trade Review* says that Shastock has a new orchestra music rack sold by J. Schwartz Music in New York (Schwartz was incorporated in 1923).
- 1930 L. W. Shastock Co., musical specialties, tools, dies, special machinery & general machine work (ad in dir).
- 1931 Mutes for brass instruments, music stands & musical accessories (ad in dir).
- 1932 Address changes to #2530 Superior Ave, 5th floor (dir).
- 1934 Ad for Shastock "Voca-Tone" trumpet mute.
- 1935 Ad for Shastock "Megaphone" trumpet & trombone mutes.
- 1936 Granted patent #2,051,969 for telescoping tubing clamp. The *Presto-Times* lists L.W. Shastock Co., NYC, exhibiting in the Chicago Music Trades Convention.
- 1938 Granted patent #2,110,029 for making drum heads.
- 1938 J. Schwarts Music Co. is incorporated as Micro Musical Products Corp. on December 5.
- 1940 Now located at #1240 Ontario St. (moved after 1938 dir.). Shastock was sold to Micro Products (Roger Ingram). Louis Shastock, salesman for musical instrument manufacturer (census).
- 1942 & 1943 Louis is not in the Cleveland directory.
- 1950 Louis Shastock, building salesman (census).
- 1951 L. W. Shastock Co., musical instrument manufacturer, #1665 E. 93rd St., Cleveland (directory).



1954 Louis Shastock, salesman (company not listed). Louis dies on July 12th at age 55.

This unusual Shastock Wow-Wow mute appeared at an auction site in 2018.



#2530 & 2570 Superior Ave: These two addresses are at either end of the Artcraft Building built in 1919 for a garment factory and later rented out to artists.



#1665 East 93rd St: The location for his business in 1951 from a Sanborn map dated that year. An empty lot in 2023.

