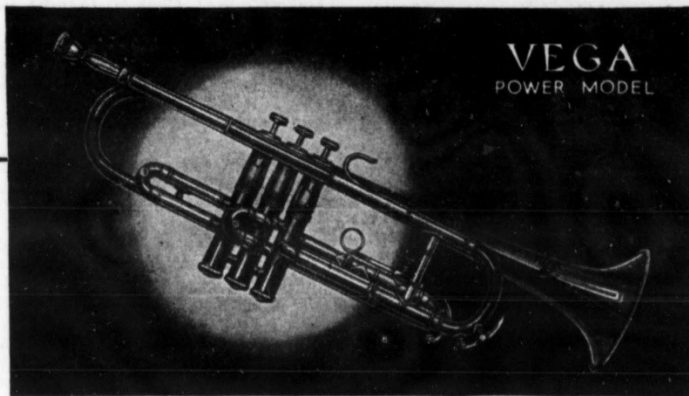


Vega Power Trumpets

1936 - 1942

The Power model trumpet was introduced in 1936 with #36146 being the earliest example that I have found. This first-generation version was made up until WWII with #41144 being the last example found so far.

October 1936 ad from International Musician.



MORE POWER TO YOU WITH THE NEW VEGA!

All the power you may want or that any leader may call for, instantly and freely! That is what the new Power Model Trumpet or Cornet will give you with full tonal clarity and easier true response to all notes, high or low, with the effect of brilliancy or roundness desired.

In every way this new Vega Power Model is incomparable and it features the recessed valve action and a one-piece bell. It is well worth a special trip to your Vega dealer to see this new model.

Prominent Men Play Power Model

Charles Teagarden (*Paul Whiteman*) • Louis Prima (*Primastyle Orchestra*) • Barry Drews, Grady Watts, Bobby Jones (*Casa Loma*)
• Ray Woods, Bob Hudson (*Ben Bernie*) • Michael Renzulli (*Irving Aaronson*) • Lou Breese (*N. B. C. Artist*) • Jack Cavan, Muggsy Spanier, Bob Clithero (*Ted Lewis*)

Ask Your Dealer or Write Direct for Circular

THE VEGA CO.

163 Columbus Avenue

Boston, Mass.



Fred Berman is shown here promoting the Martin Committee model but was also a Vega Power model artist who had a Berman model trumpet and mouthpiece.

Specifications:

19.5" long – 4.75" bell – 0.458" bore

Power model #36146 from 1936.




#36169 from 1936

Power model #37027 from 1937.



February 1937 ad from Down Beat magazine.

**Swing with Vega
Power Trumpets**



Lou Brees, French Casino, Chicago

**A Few of the Many Using
Vega for More Power**

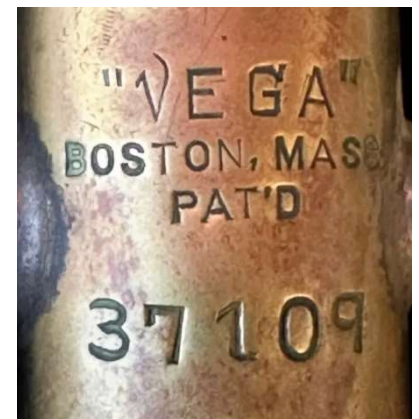
- ★ Louis Prima } *Louis Prima's*
- ★ Marion Sutter } *Trumpet Section*
- ★ Red Bolman }
- ★ Bobby Jones *with Isham Jones' Orchestra*
- ★ Tony Gianelli *with Dick Stabile*
- ★ Grady Watts *with Casa Loma*
- ★ Charlie Teagarden *with Paul Whiteman*
- ★ Ray Woods } *Trumpet Section*
- ★ Bob Hudson } *with Ben Bernie*
- ★ Ernie Mathis *with Roger Pryor*
- ★ Jack Cavan } *Brass Section*
- ★ Mugsy Spanier } *with Ted Lewis*
- ★ Bob Clithero }

Vega answers all requirements of severe modern instrumentation. Power, without over-blowing. Patented recess valve construction gives amazing flexibility. Precise voicing, pure timbre. Try Vega at your regular dealer's or send to us for complete detail.

THE VEGA CO.
163 Columbus Avenue Boston, Mass.



#37109 from 1937



The "Pat'd" mark was for their 1925 valve guide design shown at the right. The center post was designed to stabilize the spring.

Power model #38057 from 1938 (below & 2nd on right).



The secondary tuning slide section was a holdover from earlier models with a slide stop for a quick change to A.

Power model #38067 from 1938.



#40037 from 1940 (author's photos)



This has a rare silver-plated finish.



Full-size case & mouthpiece for the 1940 Power model (author's photos).






Power model #40047 from 1940 (below & right).



1939 Power model ad from Down Beat magazine.

POWERFUL MEN PLAY POWER MODEL

[Center] Jack Welton, first trumpeter with Paul Hayes' Orchestra, Los Angeles.
[Below] Harry "Golden" Goldfarb, featured trumpeter with Paul E. Sherman's Orchestra, New York.

Red Pepper, Feature Trumpeter with Abe Lerman's Orchestra.

Three Top Men Select a Trumpet!

THREE TOP MEN, members of three of the country's most outstanding bands, select a Trumpet that appeals to them most. These men are feature players, each with his own individual style of playing but their choice is the same—The Vega Power Model.

Trumpet men want to be sure that real playing qualities are right "in the horn." That is why prominent players throughout the country choose the Vega. They can be sure of every note with instant response and accuracy. You can make your job a lot easier with a Vega so we suggest you ask your local dealer to try the finest horn you have ever put to your lips.

Write today for free catalog. A postal card will bring you complete information.

VEGA POWER MODEL
165 COLUMBUS AVENUE * BOSTON, MASS.

A Few More of the Many Prominent Players using Vega

- Louis Prima and his Orchestra
- Ernie Mathis Roger Pryor Orchestra
- Karl Rhode and his Orchestra
- Tony Gianelli Al Donahue's Orchestra
- Lou Breese Joe Cantorini Rocco Castella Lou Breese's Orchestra

THE WORLD'S FINEST TRUMPET

