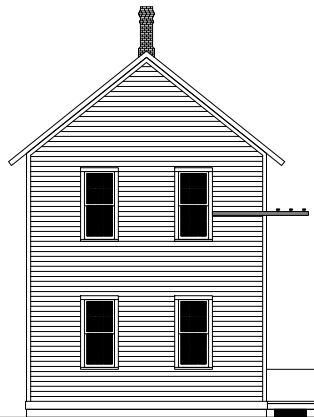


Estimated History:

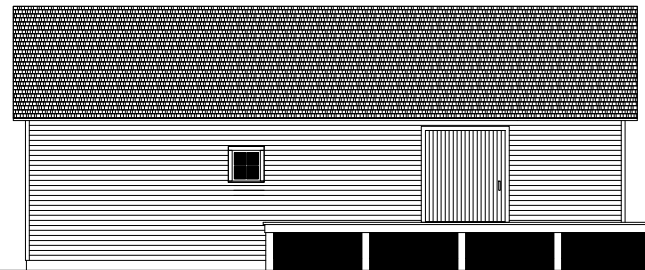
1. Northern portion built as combination station in 1865.
2. Southern two-story section added in 1891 for \$600.
3. Door in south end replaced by window around 1910; probably done when new station was built and this building was just needed for freight.
4. Two windows in north end replaced by one small window and all siding horizontal before 1928.
5. South end removed in 1931.
6. North end moved back to make room for extra siding in 1938.
7. North end removed soon after 1984.



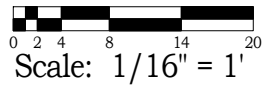
East Elevation



South Elevation



East Elevation in 1984



**DELAWARE & HUDSON RAILROAD**  
Corinth Station c.1900

Based on 1921 D&H survey & on photos.  
Drawn by Jon Patton, 1/8/2009