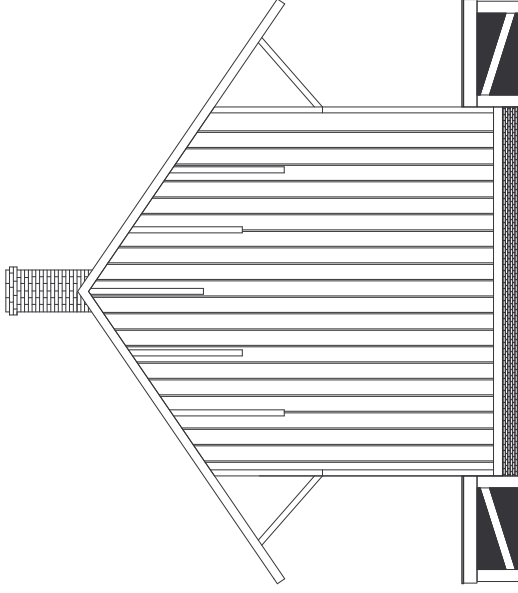
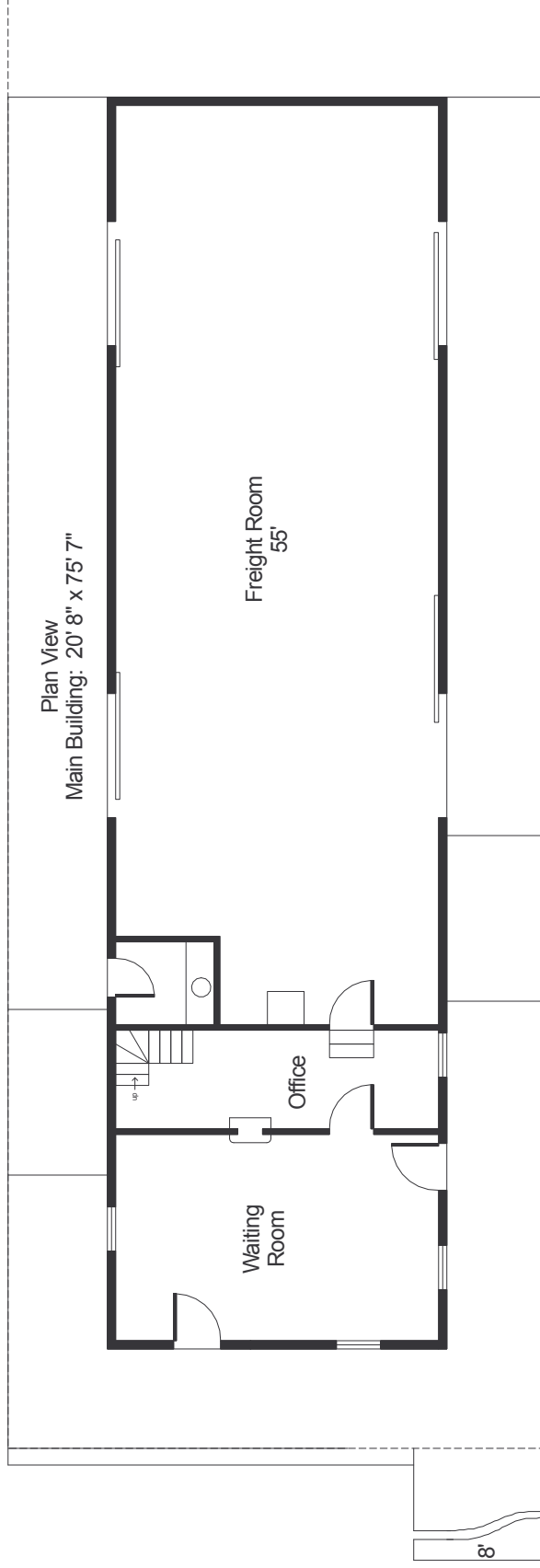


South Elevation



North Elevation



Plan View
Main Building: 20' 8" x 75' 7"

Freight Room
55'

Office

Waiting
Room

8'



Scale: 3/32" = 1'

DELAWARE & HUDSON RAILROAD
Riverside Station

Based on D&H drawing from 1931 & photos / JRP 772001

as built in 1872